

## Sample collection instructions

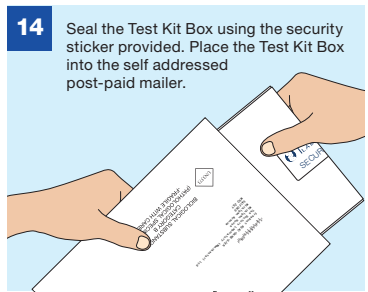
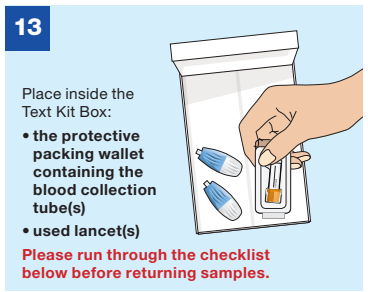
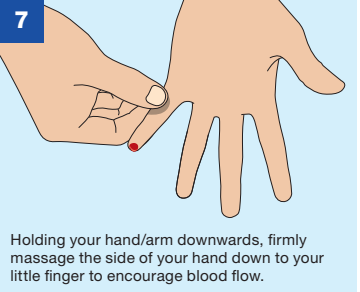
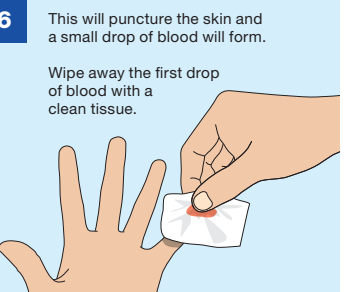
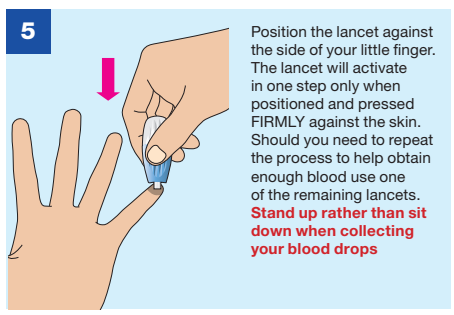
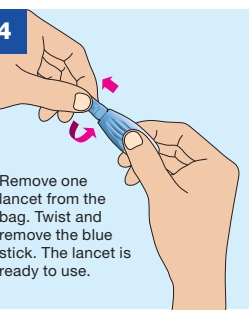
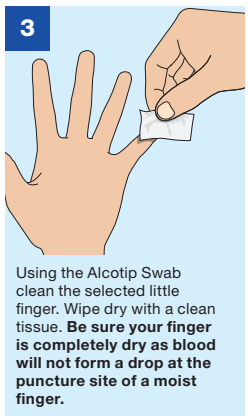
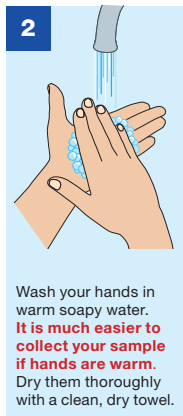
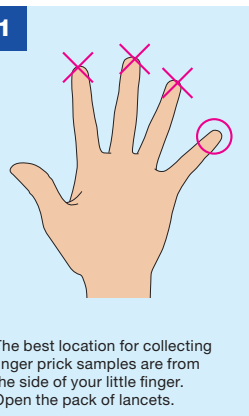
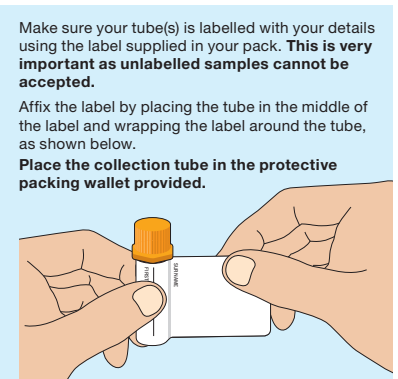
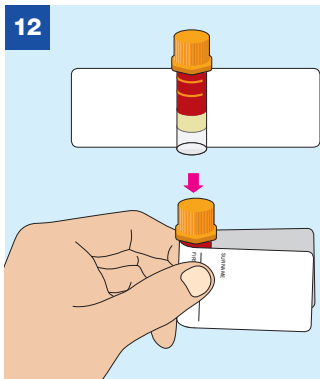
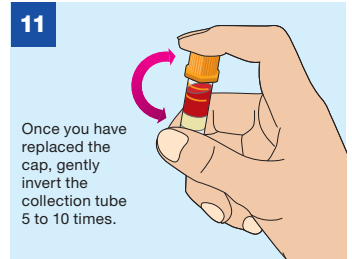
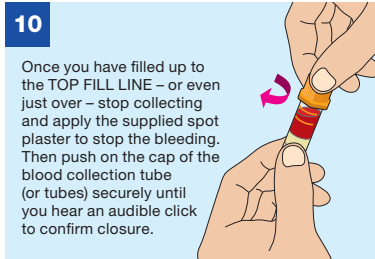
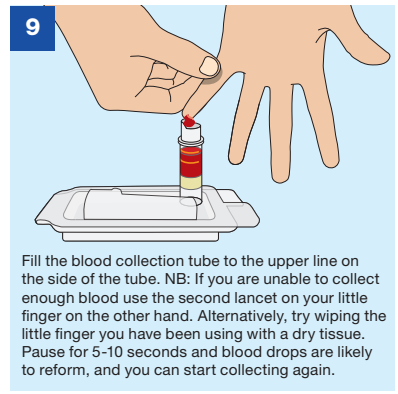
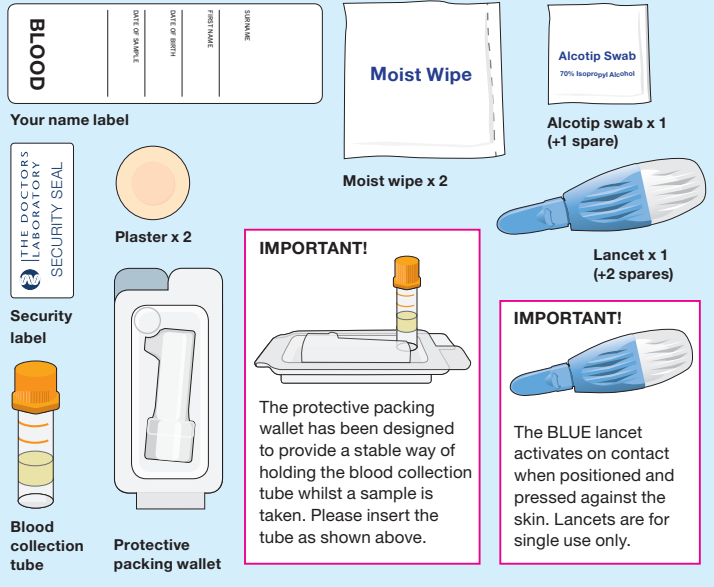
Please read these instructions first, slowly and carefully, the whole way through before attempting to collect your sample.

Clearly complete the Name Label using a ball point pen with:

- Your Surname • Your Date of Birth • Your First Name • Date of Blood Collection

**Do not affix the label to the blood collection tube until after collecting your sample. This is important as you will not be able to see how much blood you have collected if the label covers the sides of the tube.**

## Your sample collection pack contents



## CHECKLIST

Before you return your samples please tick off the contents of the white self addressed post-paid mailer.

- Completed Request form
- Blood collection tube(s) in the protective packing wallet
- Used lancets

**You are now ready to seal the white self addressed post-paid mailer.** Please post your samples to **The Doctors Laboratory** as soon as possible from **ANY** Royal Mail post box in the UK. No stamp is required within the UK.

If you need assistance please contact The Doctors Laboratory on 020 7307 7373 or email [samples@tdlpathology.com](mailto:samples@tdlpathology.com). If you wish to return your lancets please enclose with your samples.